

Zone of Theoretical Visibility (ZTV) Map indicating areas with a theoretical view of the proposed Drumnahough turbines

Calculated to Blade Tip Height (167.5m)

- Proposed Drumnahough Turbines
  -
- Number of Turbines Visible
  - 1 - 3
  - 4 - 6
  - 7 - 9
  - 10 - 12
- Photomontage Locations
  -
- Drumnahough 30km Extent
  -

**FINAL**

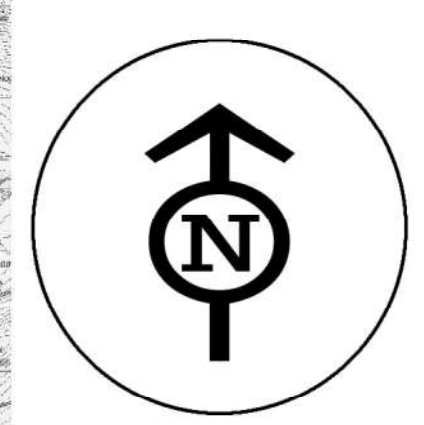
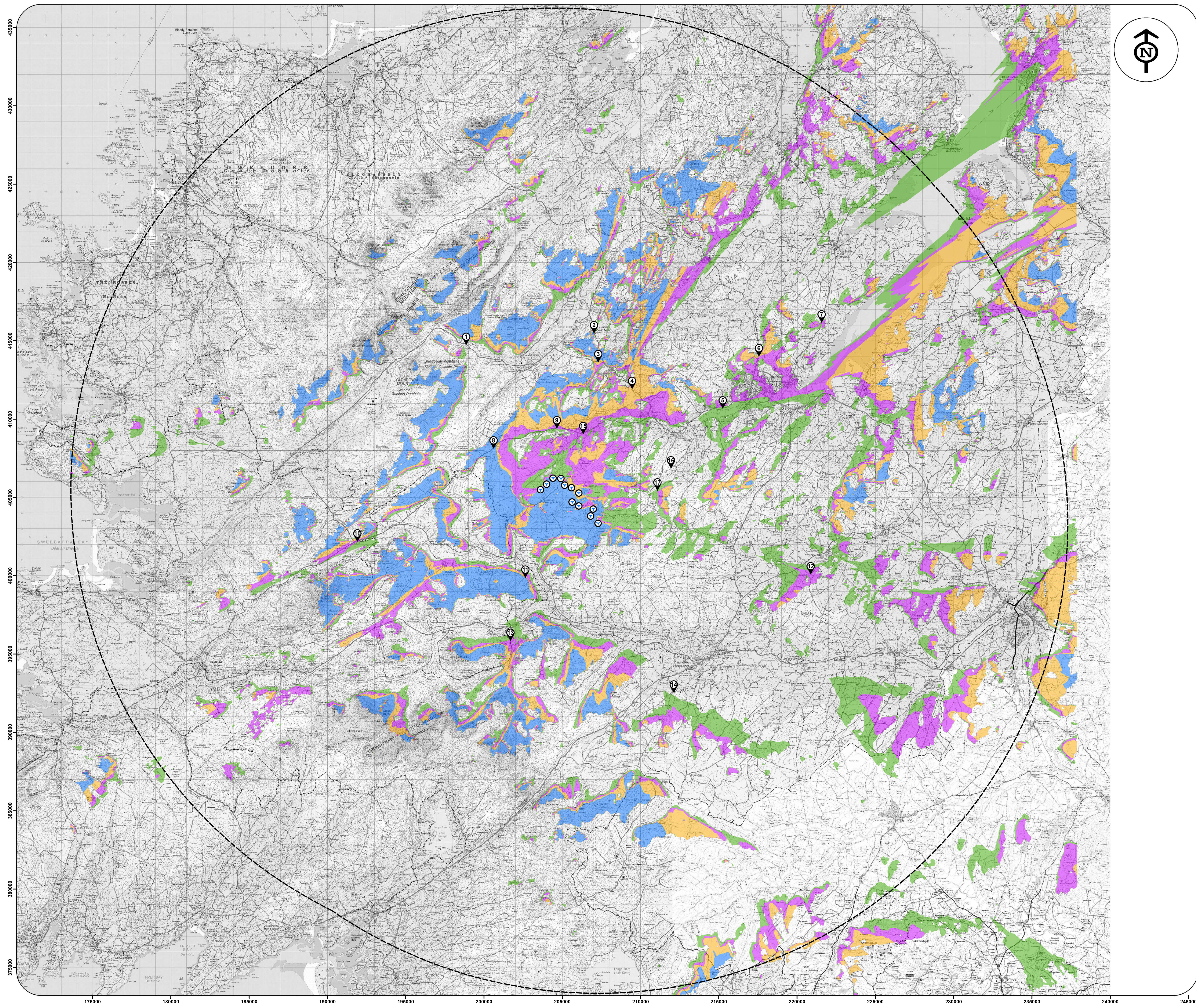
Date: 1st April 2020

Scale when printed at A1 Size = 1:110,000  
1 centimeter = 1,100 meters

- Notes:
- Theoretical visibility is based on an observer being able to see at least a turbine blade tip.
  - Theoretical visibility is based on an observer eye level of 2m above ground level.
  - Calculation does not account for screening due to vegetation, forestry, buildings or any other similar forms of screening.
  - Calculation has been run using Ordnance Survey 10m DTM height data.
  - Earth curvature and light refraction has been included in this calculation.







Zone of Theoretical Visibility (ZTV) Map indicating areas with a theoretical view of the proposed Drumnahough turbines

Calculated to Hub Height (95m)

Proposed Drumnahough Turbines



Number of Turbines Visible

- 1 - 3
- 4 - 6
- 7 - 9
- 10 - 12

Photomontage Locations



Drumnahough 30km Extent



**FINAL**

Date: 1st April 2020

Scale when printed at A1 Size = 1:110,000  
1 centimeter = 1,100 meters

- Notes:
- Theoretical visibility is based on an observer being able to see at least a full turbine blade.
  - Theoretical visibility is based on an observer eye level of 2m above ground level.
  - Calculation does not account for screening due to vegetation, forestry, buildings or any other similar forms of screening.
  - Calculation has been run using Ordnance Survey 10m DTM height data.
  - Earth curvature and light refraction has been included in this calculation.

